



Instrucciones / Instructions / Anweisungen / Instructions

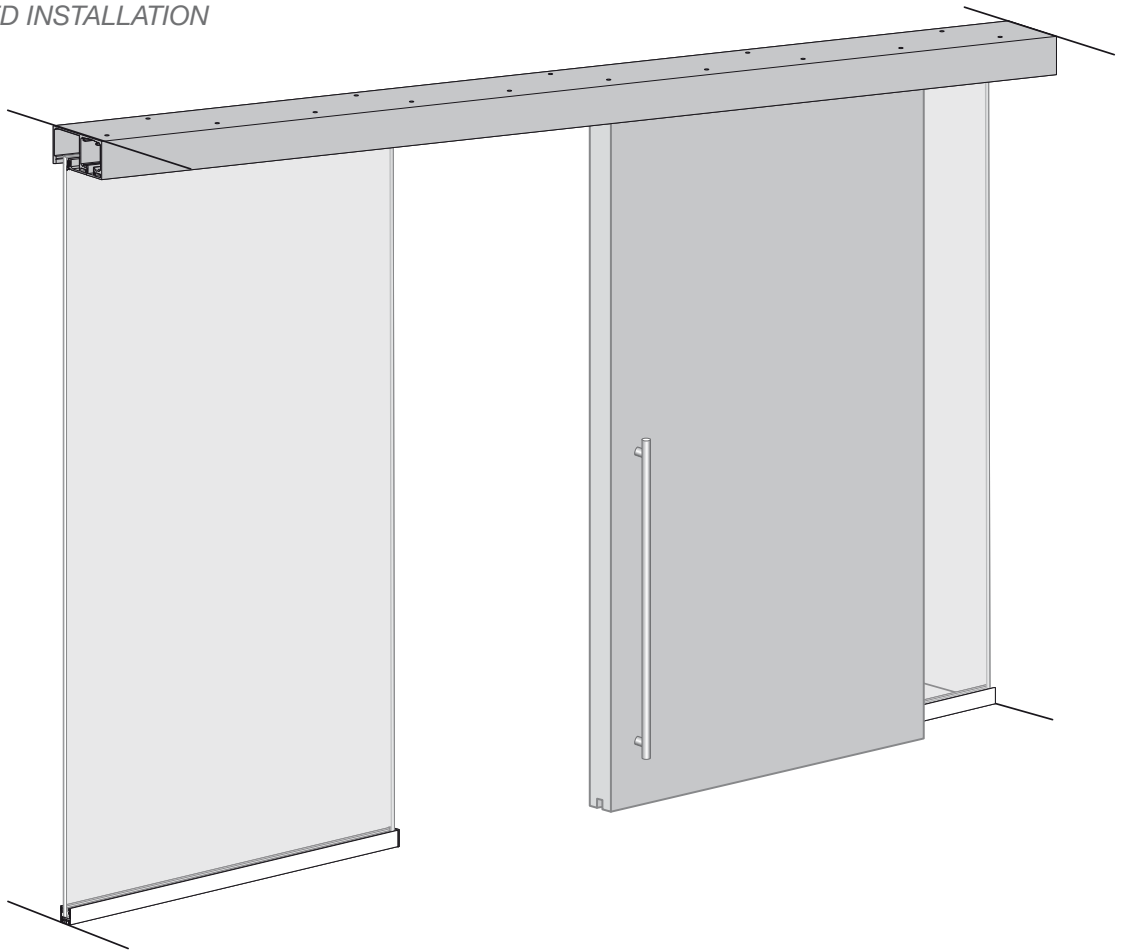
FRONT

KLEIN[®]

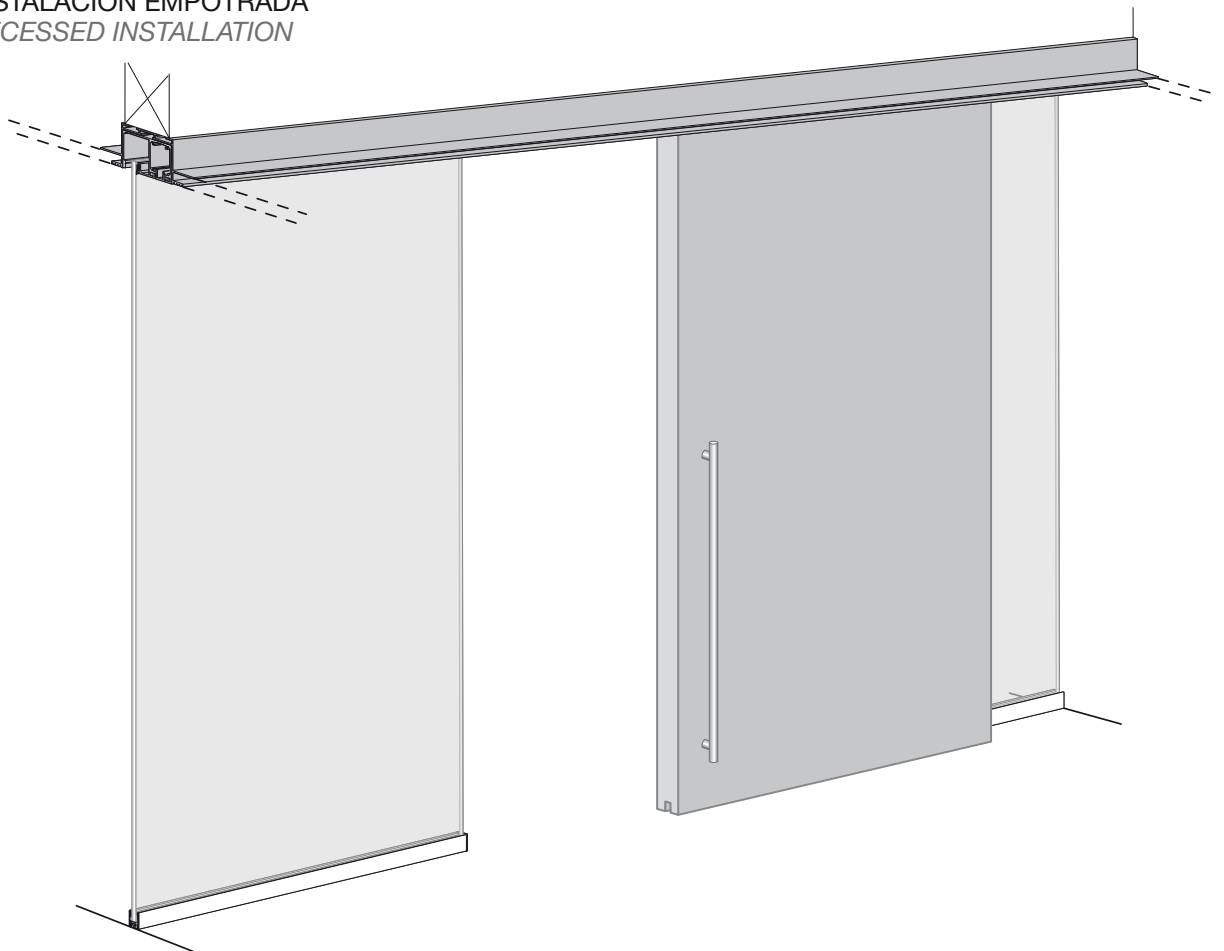
	<i>PAG.</i>
1 TIPOLOGÍAS DE INSTALACIÓN <i>INSTALLATION TYPES</i>	3
2 INFORMACIÓN DE SEGURIDAD <i>SAFETY INFORMATION</i>	4
3 HERRAMIENTAS NECESARIAS <i>REQUIRED TOOLS</i>	4
4 INFORMACIÓN GENERAL <i>GENERAL INFORMATION</i>	4
5 ELEMENTOS DE LA INSTALACIÓN <i>ITEMS OF INSTALLATION</i>	6
6 ACTIVACIÓN DE LOS KSC <i>KSC ACTIVATION</i>	7
7 COLOCACIÓN DE LOS KSC <i>KSC INSTALL</i>	7
8 MONTAJE DEL PERFIL PARA INSTALACIÓN VISTA <i>UPPER TRACK MOUNTING FOR EXPOSED INSTALLATION</i>	7
9 MONTAJE DEL PERFIL PARA INSTALACIÓN EMPOTRADA A FALSO TECHO <i>UPPER TRACK MOUNTING FOR RECESSED INSTALLATION</i>	
FASE 1 - MONTAJE PERFIL MARCO STEP 1 - FRAME TRACK MOUNTING	8
FASE 2 - ENCUENTRO A FALSO TECHO STEP 2 - RECESSED CONNECTION	9
FASE 3 - MONTAJE PERFIL SUPERIOR STEP 3 - UPPER TRACK MOUNTING	9
10 COLOCACIÓN DEL PERFIL INFERIOR <i>BOTTOM TRACK MOUNTING</i>	10
11 COLOCACIÓN DEL VIDRIO FIJO <i>FIXED GLASS MOUNTING</i>	11
12 COLOCACIÓN DEL PERFIL RETRAC <i>RETRAC TRACK MOUNTING</i>	12
13 COLOCACIÓN DEL GUIADOR <i>GUIDE INSTALL</i>	12
14 COLOCACIÓN DE LA PUERTA <i>DOOR MOUNTING</i>	12
15 AJUSTE DEL PERNO <i>BOLT ADJUSTMENT</i>	13
16 COLOCACIÓN DE LAS TAPAS LATERALES DEL PERFIL RETRAC <i>END CAPS FOR RETRAC TRACK INSTALL</i>	13
17 AJUSTE DE LOS KSC <i>KSC ADJUSTMENT</i>	13
18 COLOCACIÓN DEL TAPABOCAS DEL CANAL DE VIDRIO FIJO <i>COVER FOR UPPER FIXED GLASS CHANNEL</i>	14
19 COLOCACIÓN DEL TAPABOCAS DEL CANAL DE PUERTA CORREDERA <i>COVER FOR UPPER SLIDING DOOR CHANNEL</i>	15



INSTALACIÓN VISTA
EXPOSED INSTALLATION



INSTALACIÓN EMPOTRADA
RECESSED INSTALLATION



2 INFORMACIÓN DE SEGURIDAD / SAFETY INFORMATION

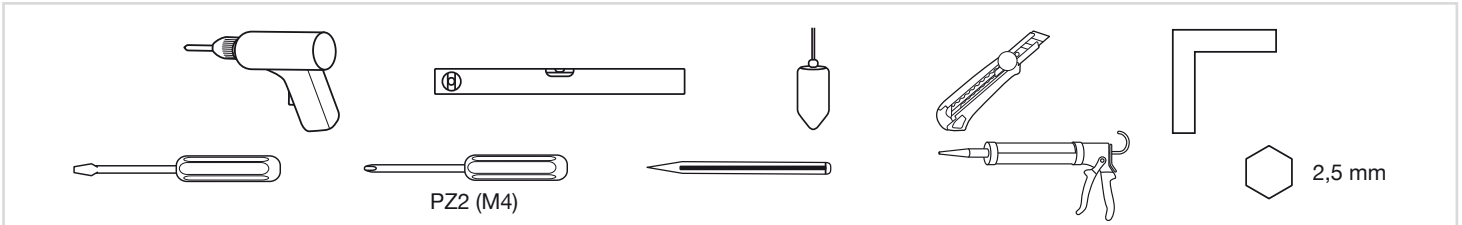
El vidrio fijo debe cumplir con las normas:

- UNE EN 572-2:2012 Vidrio para la edificación. Productos básicos de vidrio de silicato sodocálcico. Parte 2: Vidrio plano.
- UNE EN 12150-1:2016 Vidrio para la edificación. Vidrio de silicato sodocálcico de seguridad templado térmicamente. Parte 1: Definición y descripción.
- UNE EN ISO 12543-1/6:2011 Vidrio para la edificación. Vidrio laminado y vidrio laminado de seguridad.

Fixed glass must meet the requirements of:

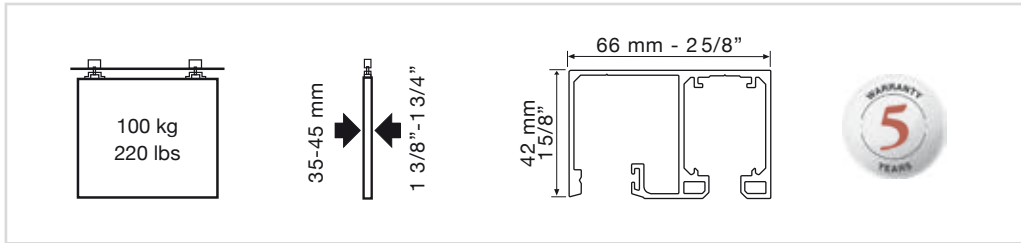
- UNE EN 572-2:2012 Glass in building. Basic soda lime silicate glass products. Part 2: Float glass.
- UNE EN 12150-1:2016 Glass in Building. Thermally toughened soda lime silicate safety glass. Part 1: Definition and description.
- UNE EN ISO 12543-1/6:2011 Glass in building. Laminated glass and laminated safety glass.

3 HERRAMIENTAS NECESARIAS / REQUIRED TOOLS

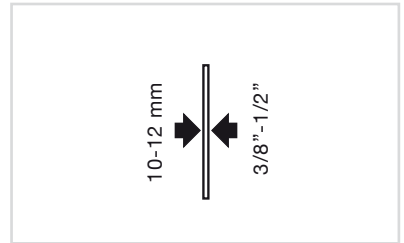


4 INFORMACIÓN GENERAL / GENERAL INFORMATION

HOJA CORREDERA MADERA / SLIDING WOOD DOOR

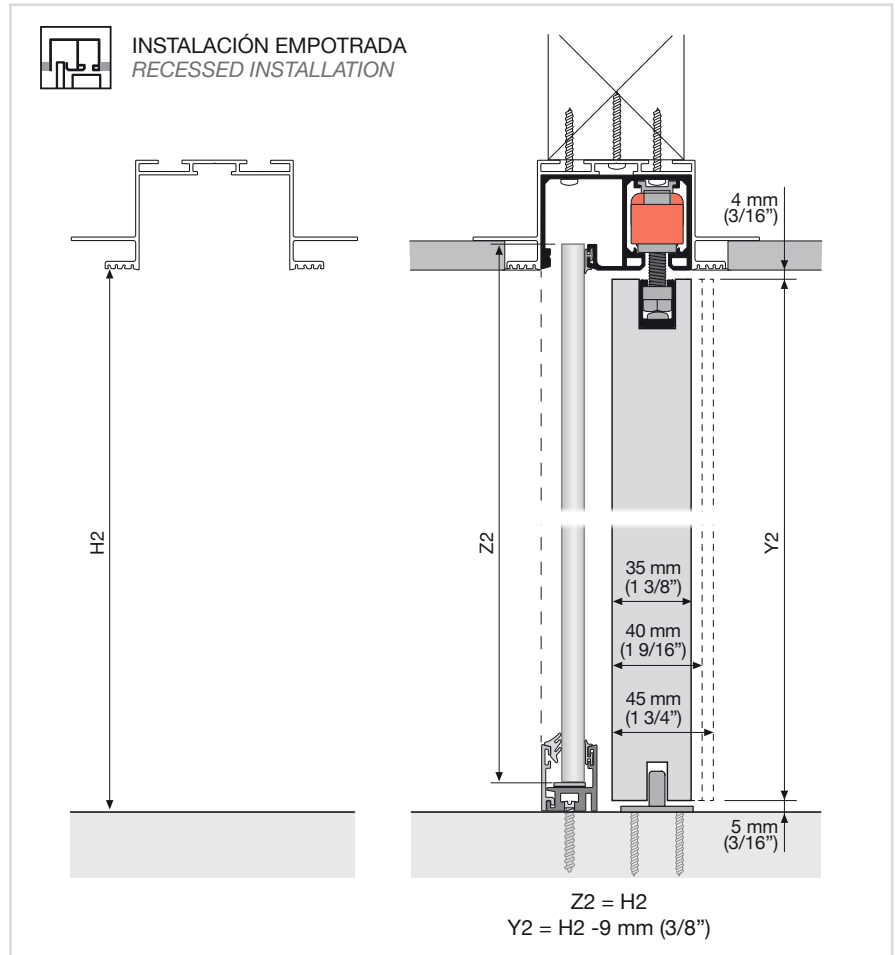
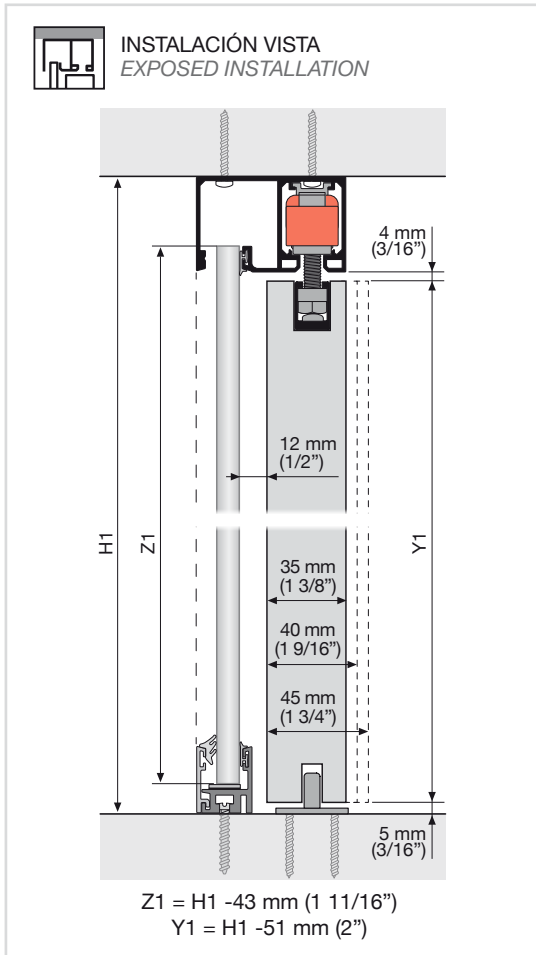


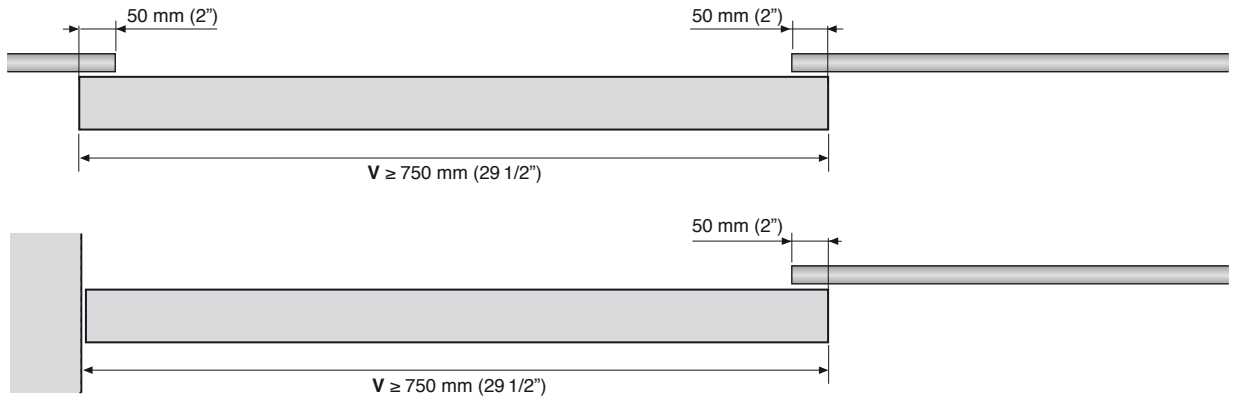
VIDRIO FIJO / FIXED GLASS



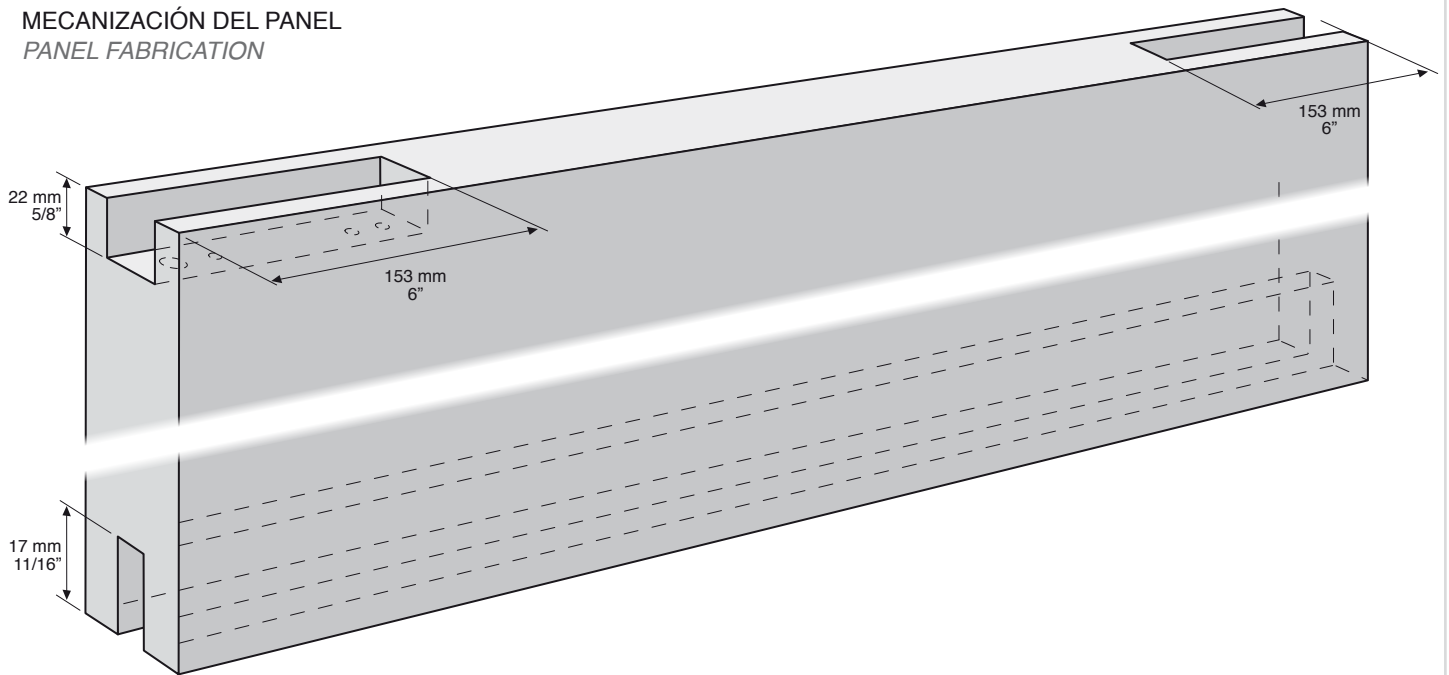
ALTURA DE LAS HOJAS / LEAVES HEIGHT

Aplicar la fórmula para determinar las alturas según el tipo de instalación
Apply the formula to determine the height according to the type of installation

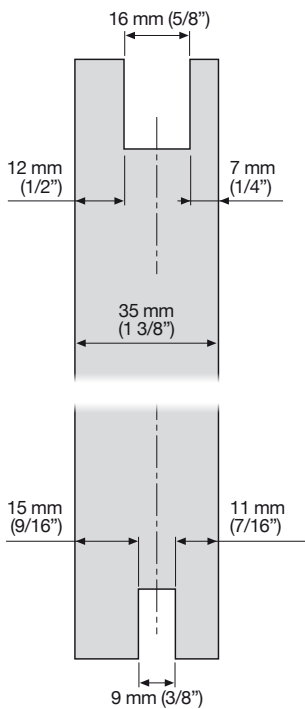




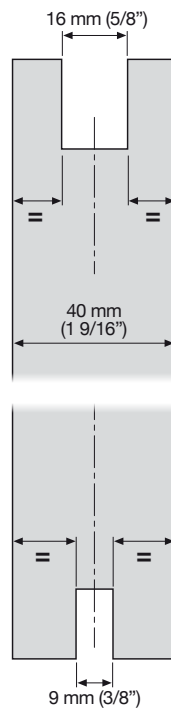
MECANIZACIÓN DEL PANEL
PANEL FABRICATION



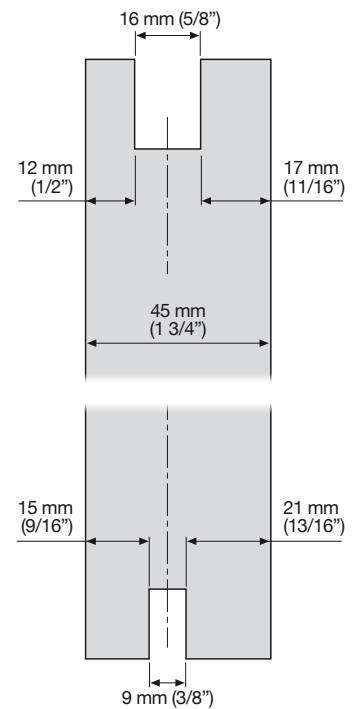
PUERTA 35 MM
DOOR 1 3/8"



PUERTA 40 MM
DOOR 1 9/16"

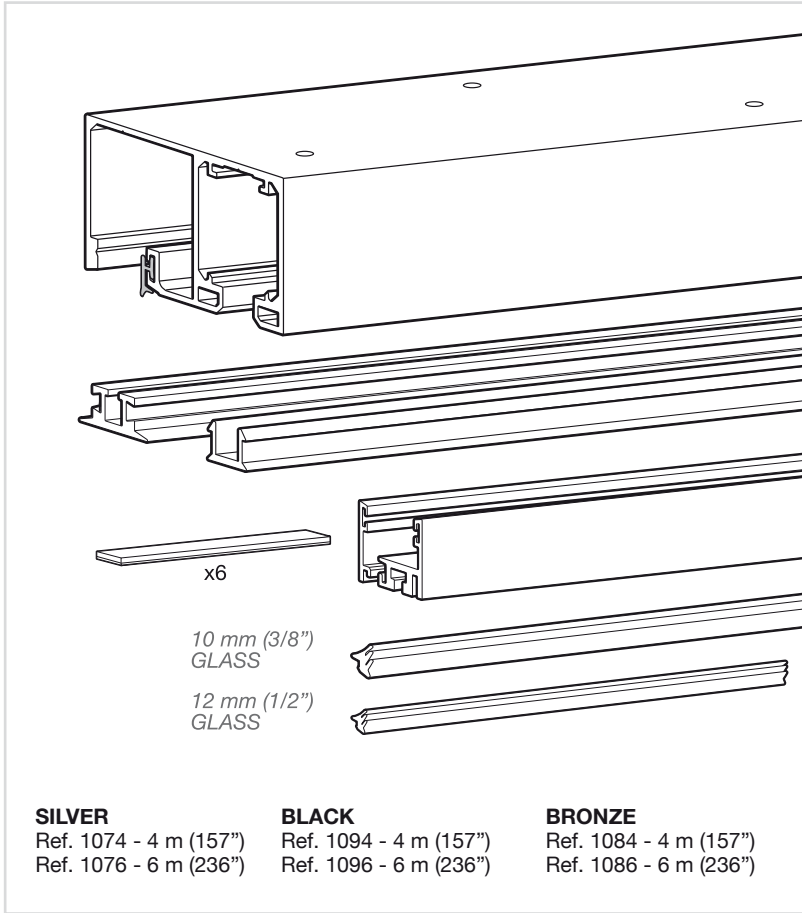


PUERTA 45 MM
DOOR 1 3/4"

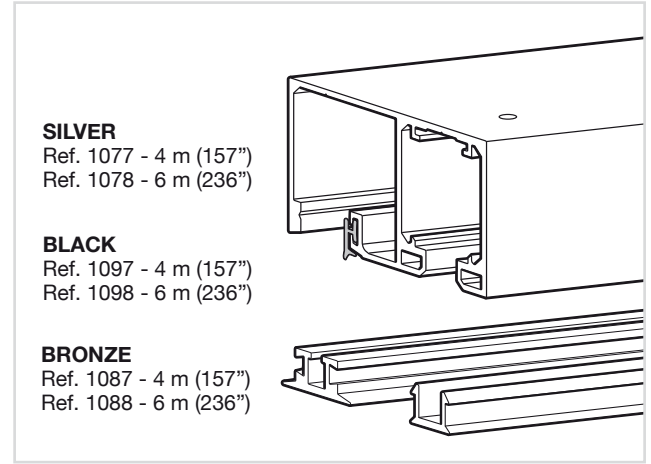




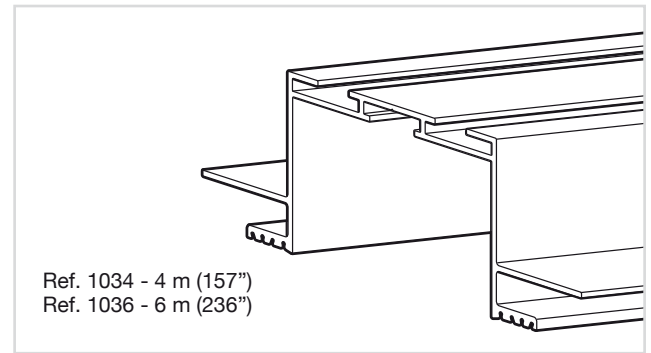
PERFILES FRONT TRACKS FRONT



PERFILES SUPERIORES FRONT TRACKS FRONT



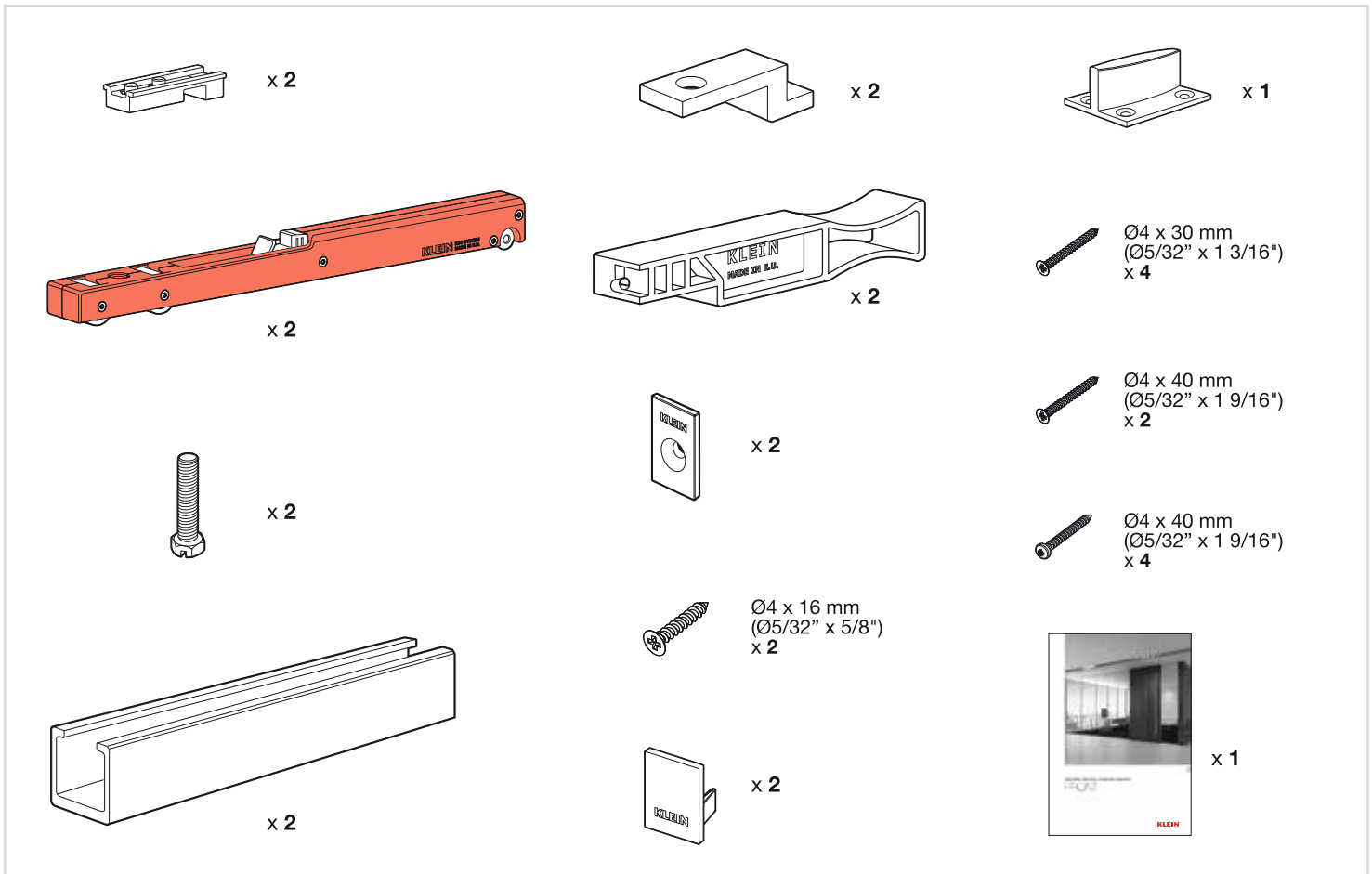
PERFIL FALSO TECHO FRONT RECESSED TRACK FRONT



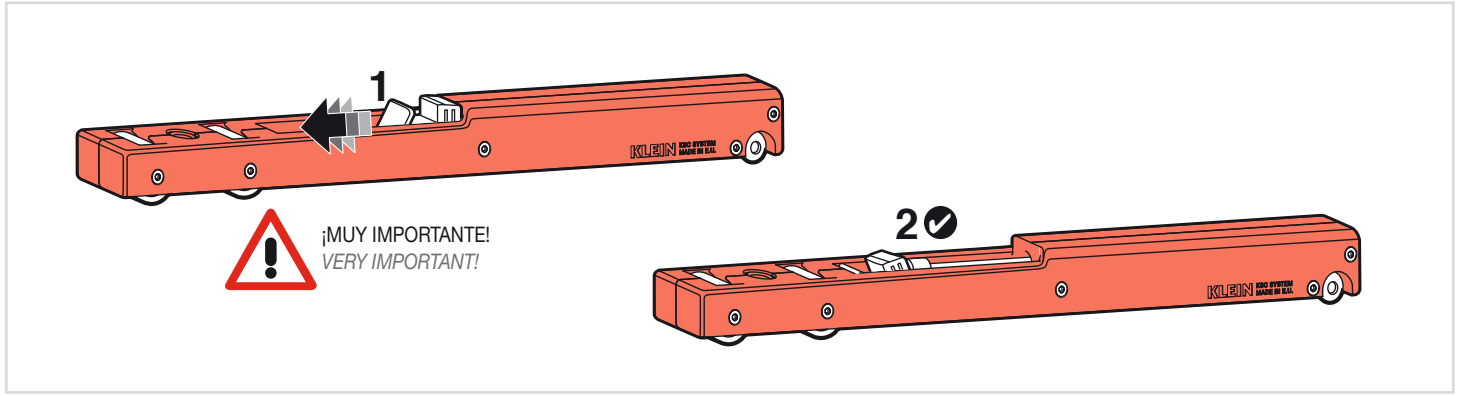
JUEGO DE ACCESORIOS FRONT SET OF ACCESSORIES FRONT

SILVER
Ref. 1070

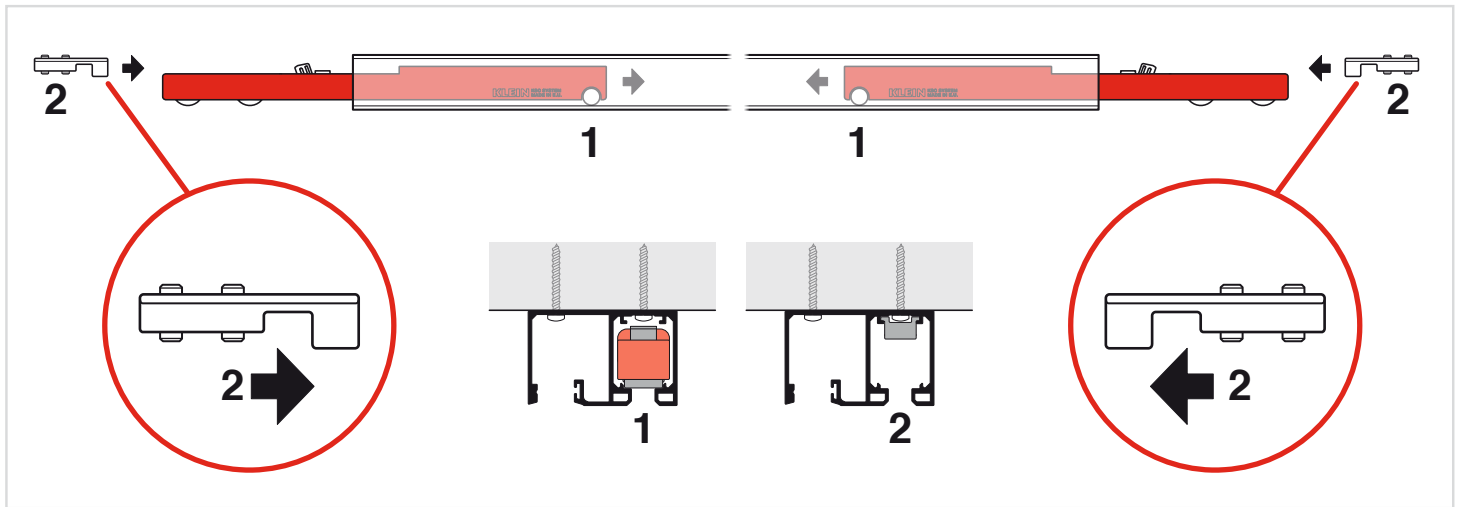
BLACK / BRONZE
Ref. 1072



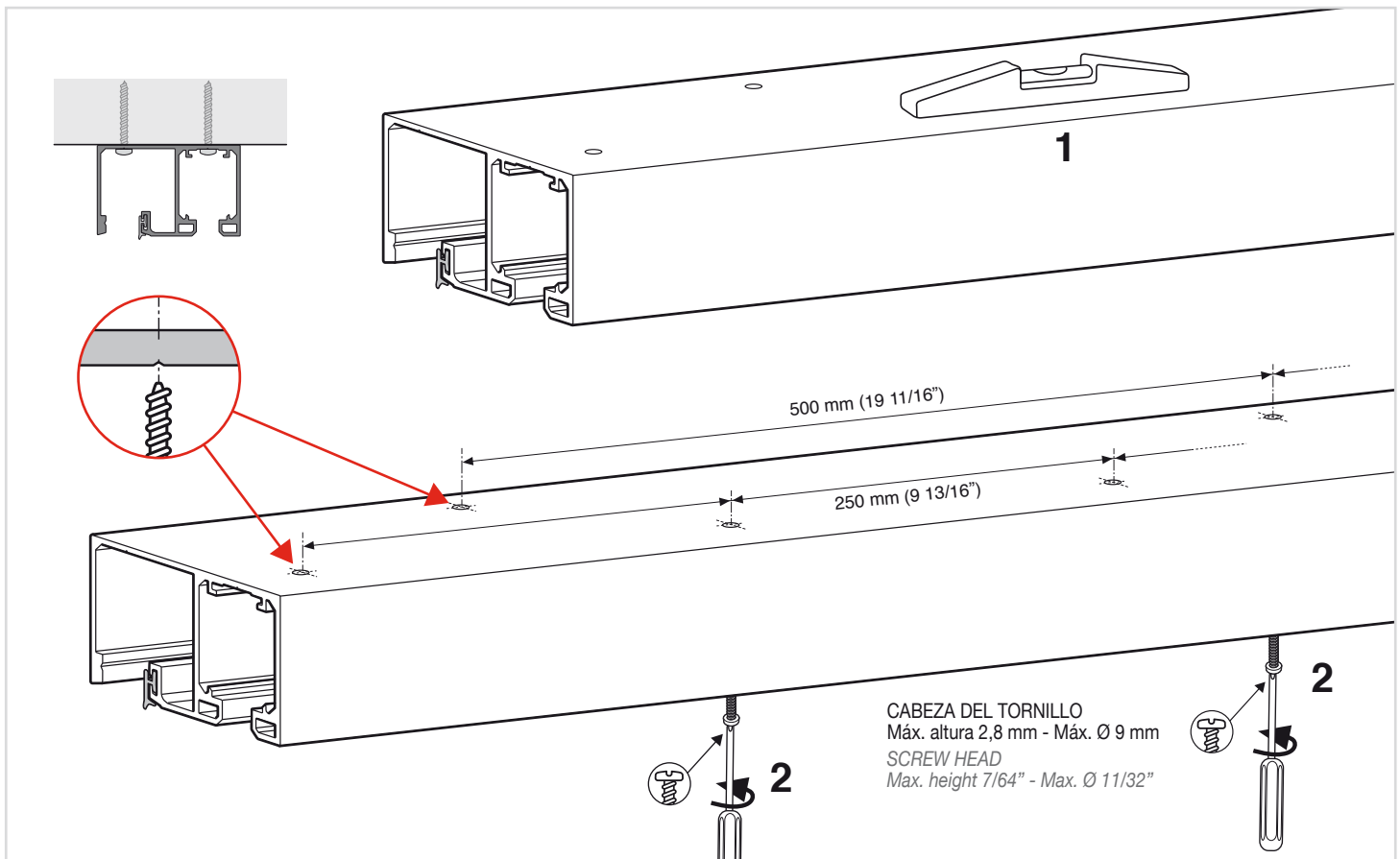
6 ACTIVACIÓN DE LOS KSC / KSC ACTIVATION



7 COLOCACIÓN DE LOS KSC / KSC INSTALL



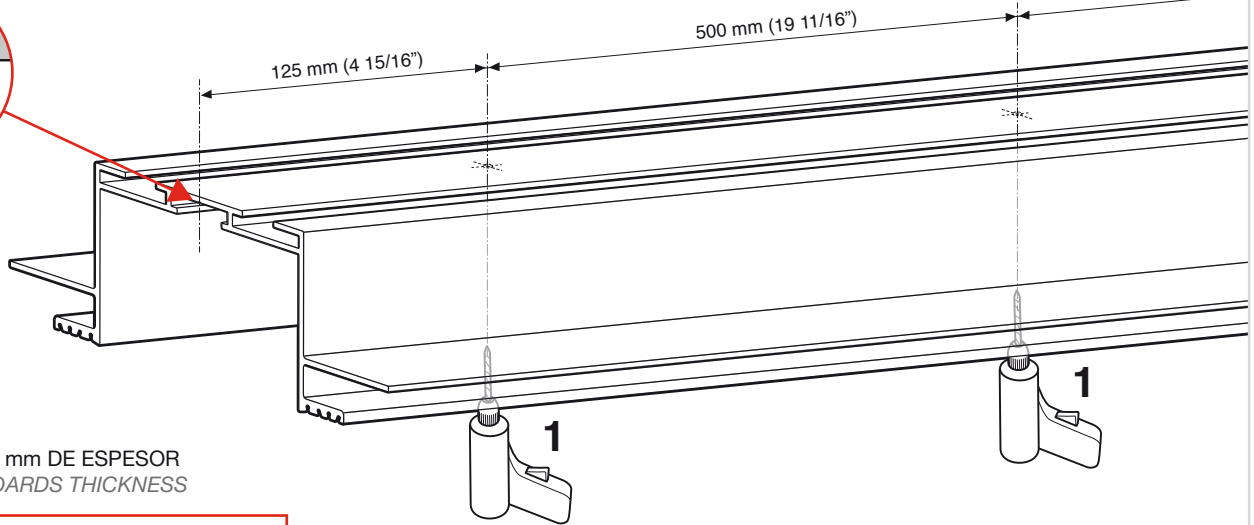
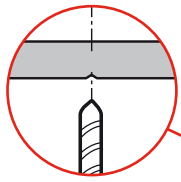
8 MONTAJE DEL PERFIL PARA INSTALACIÓN VISTA UPPER TRACK MOUNTING POR EXPOSED INSTALLATION



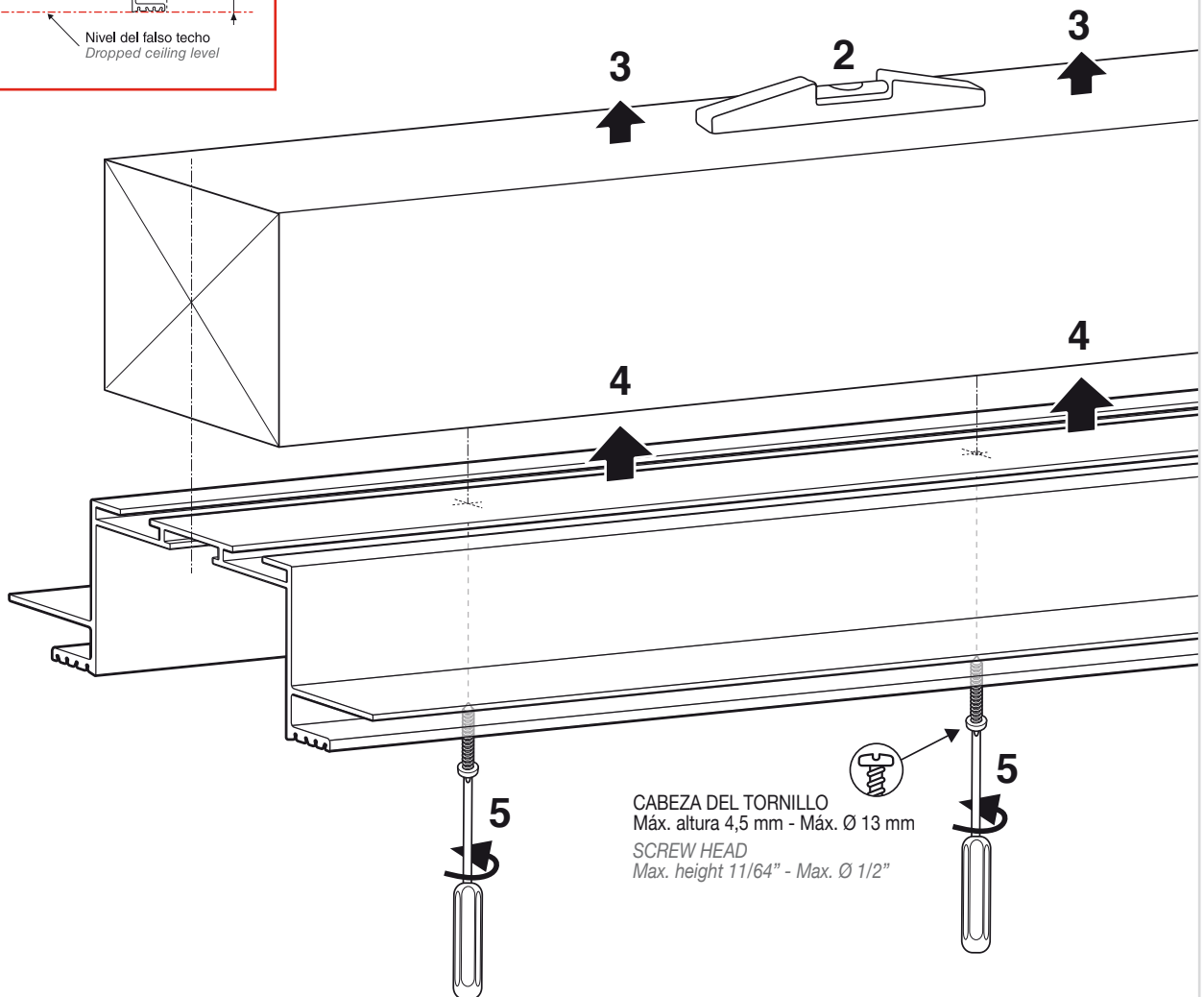
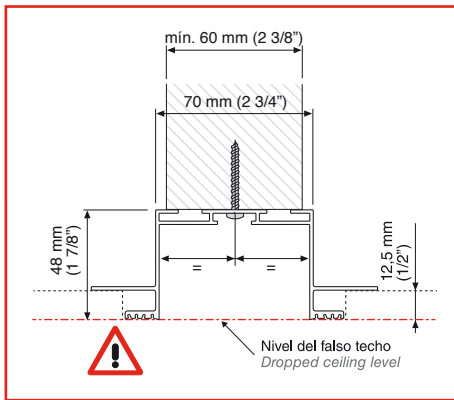


FASE 1 - MONTAJE PERFIL MARCO

STEP 1 - FRAME TRACK MOUNTING

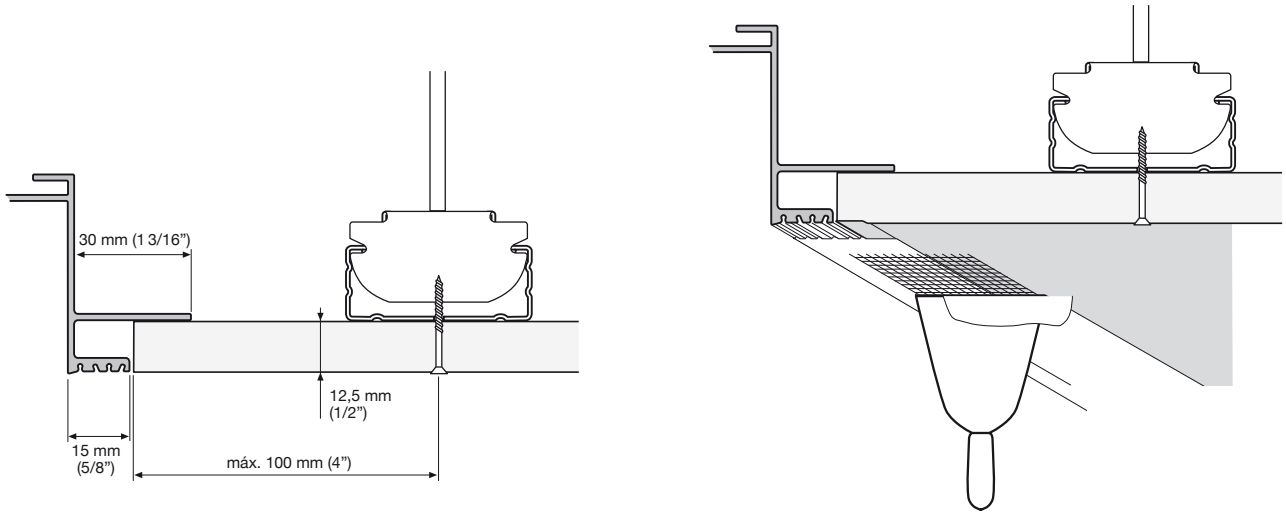


PLACAS DE 12,5 mm DE ESPESOR
1/2" PLASTERBOARDS THICKNESS



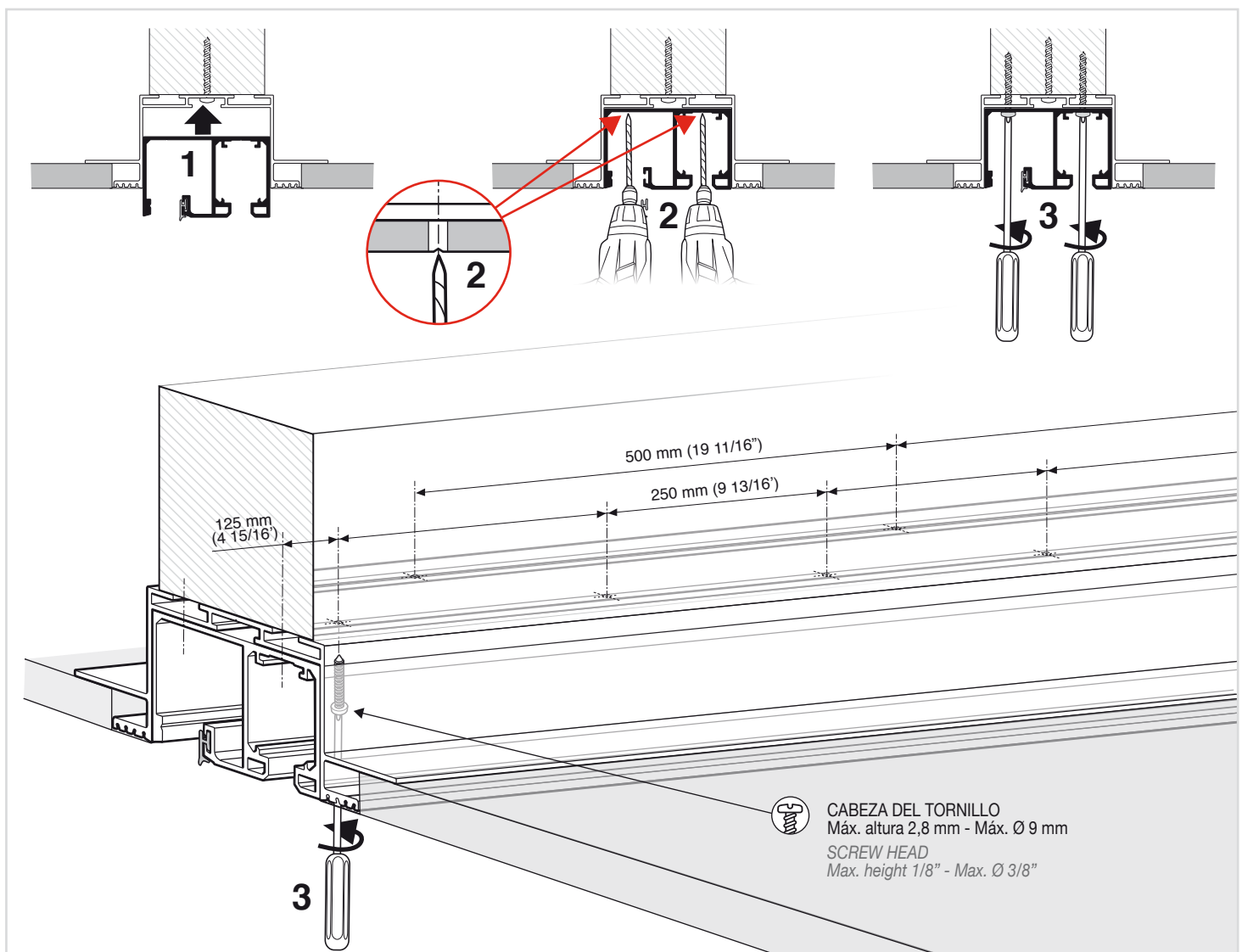
FASE 2 - ENCUENTRO A FALSO TECHO
STEP 2 - RECESSED CONNECTION

JUNTA ENTRE PERFIL MARCO Y PANEL
JOINT BETWEEN FRAME TRACK AND PLASTERBOARD

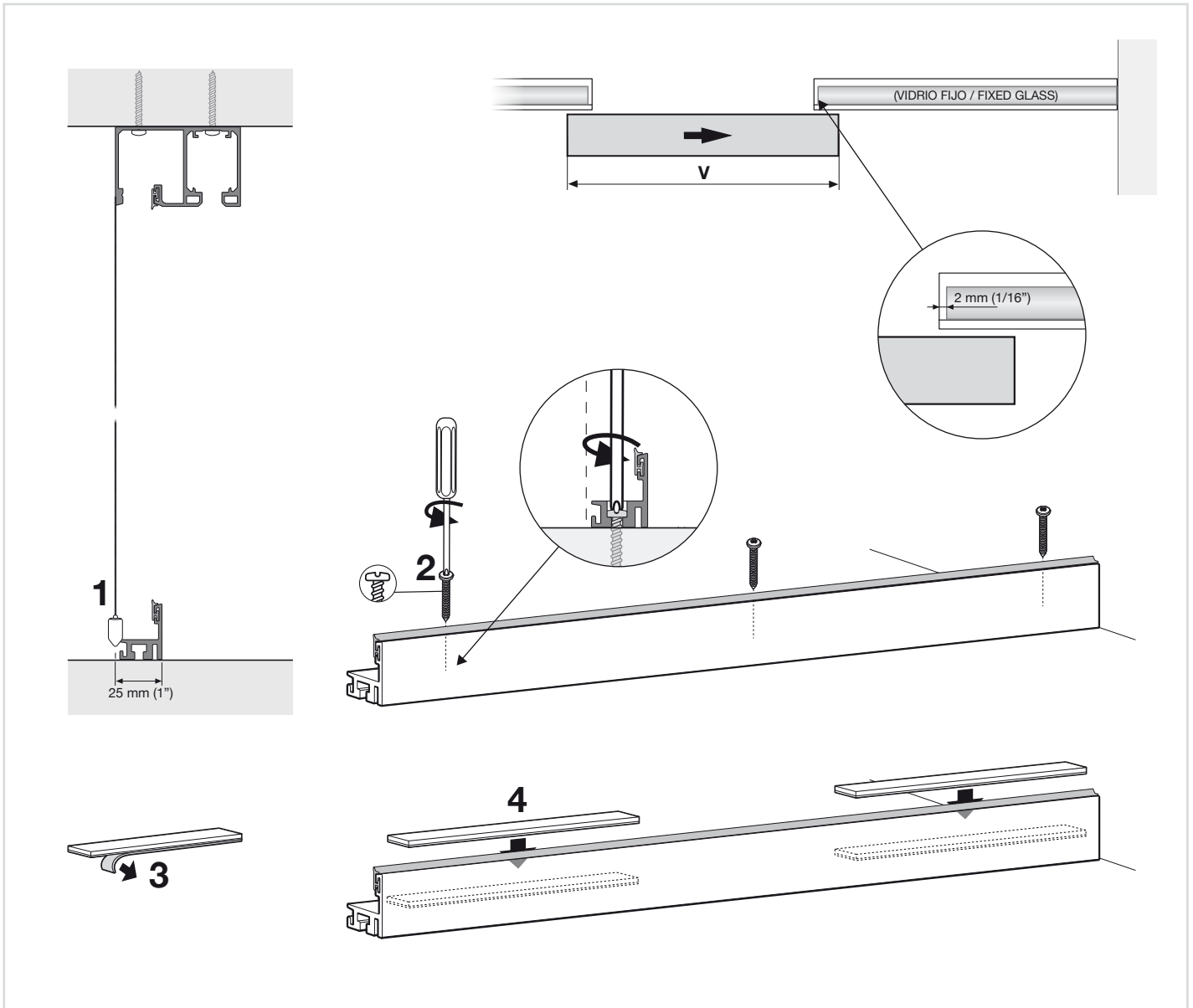


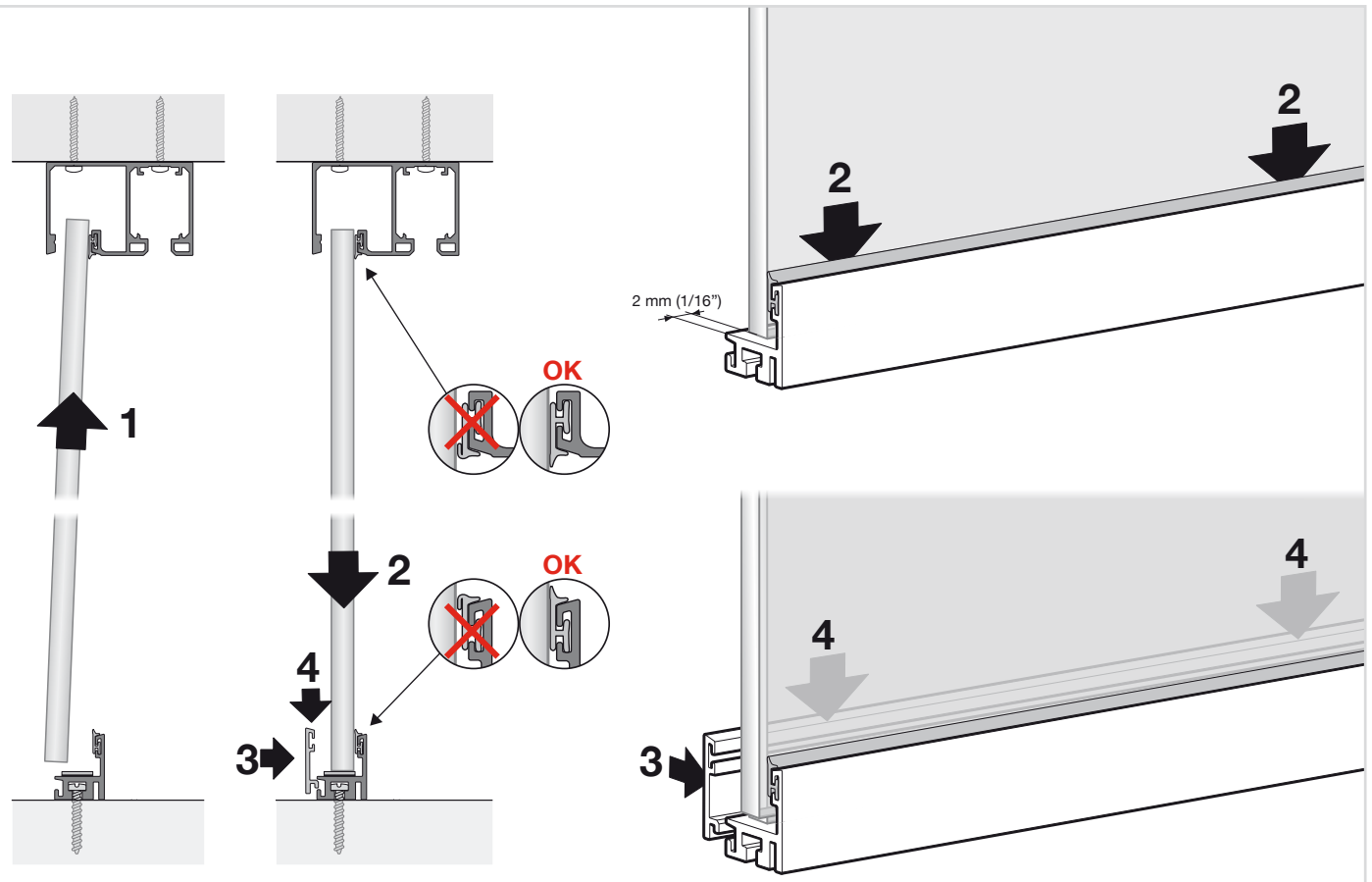
SEGUIR LAS INDICACIONES DEL FABRICANTE DE PLACAS DE YESO LAMINADO PARA LA JUNTA
 FOLLOW THE INSTRUCTIONS OF THE PLASTERBOARD MANUFACTURER FOR THE JOINT

FASE 3 - MONTAJE PERFIL SUPERIOR
STEP 3 - UPPER TRACK MOUNTING

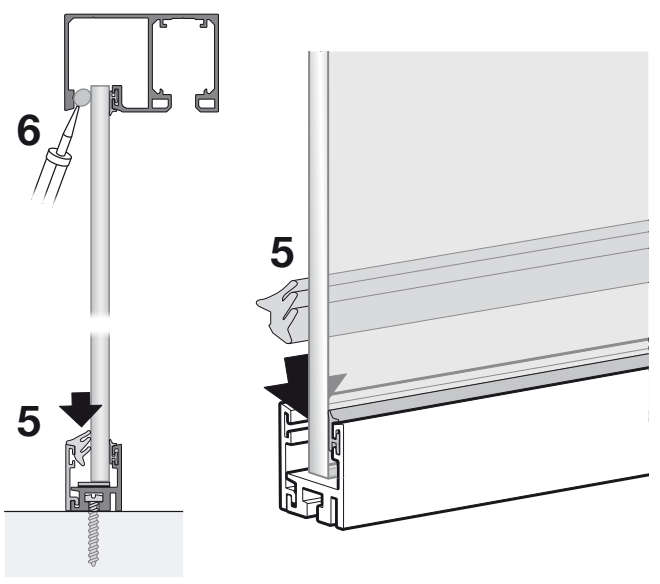


 CABEZA DEL TORNILLO
 Max. altura 2,8 mm - Max.  9 mm
 SCREW HEAD
 Max. height 1/8" - Max.  3/8"

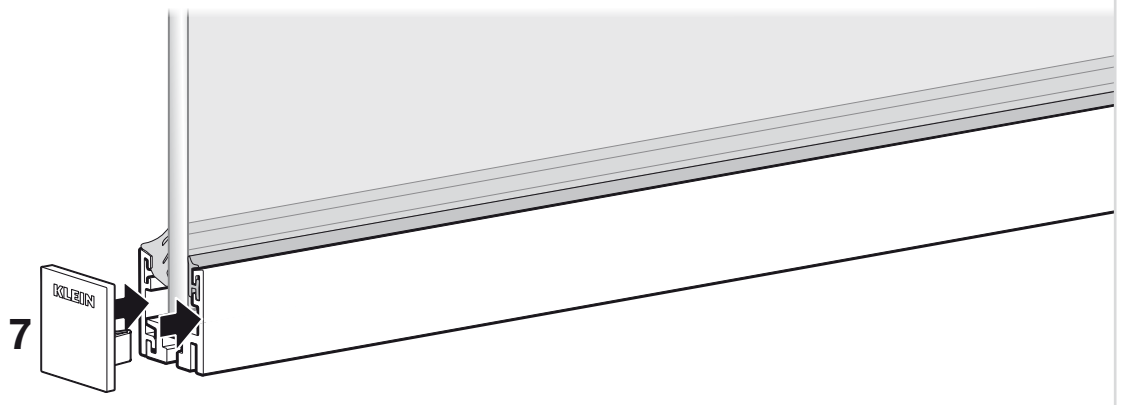
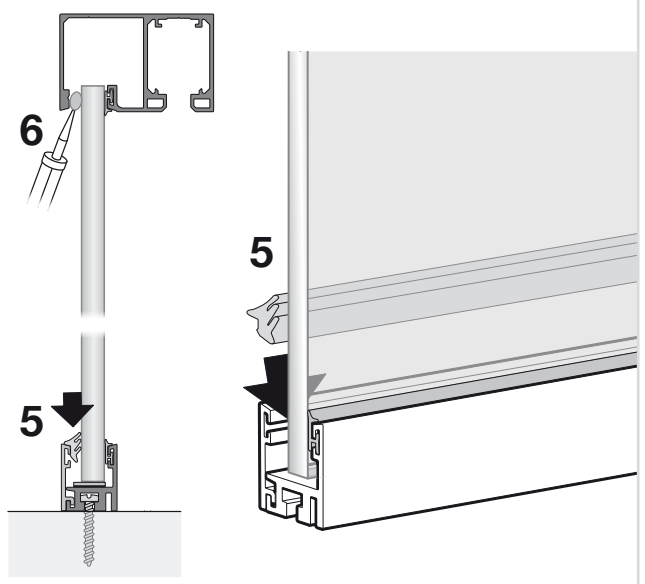




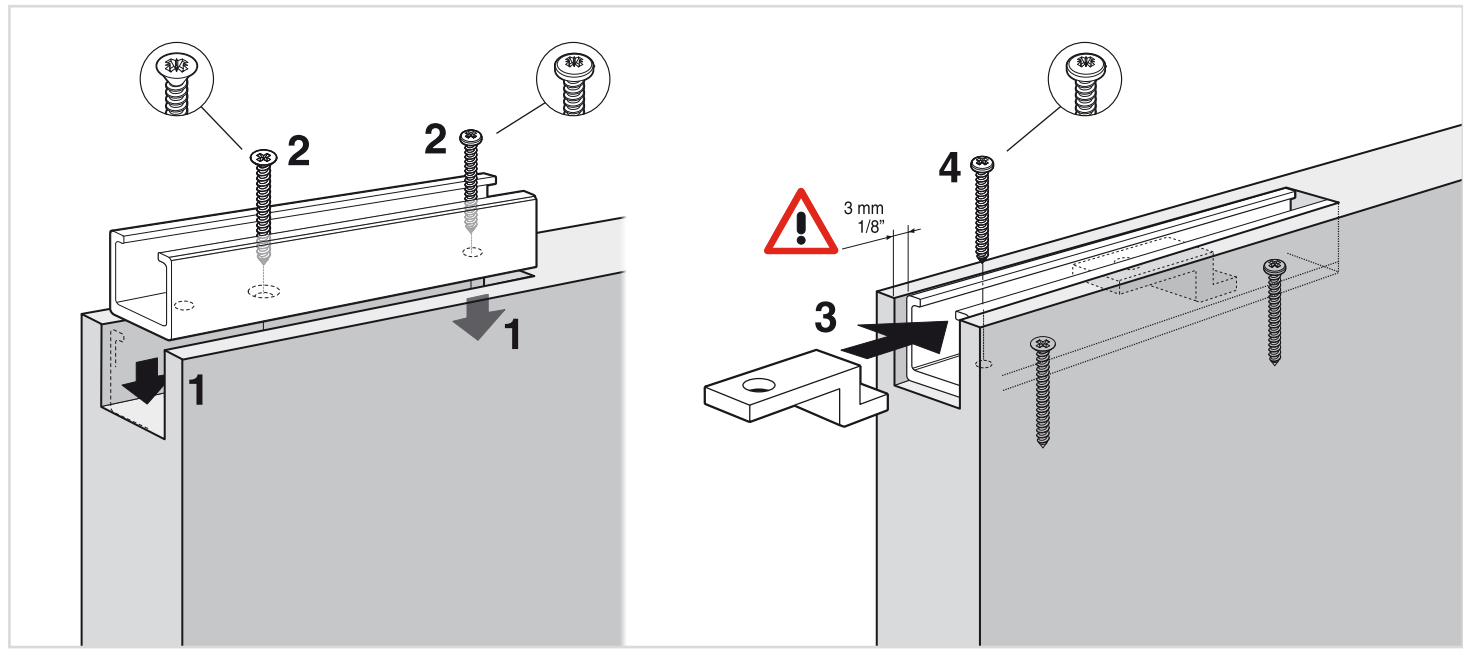
Vidrio 10 mm
Glass 3/8"



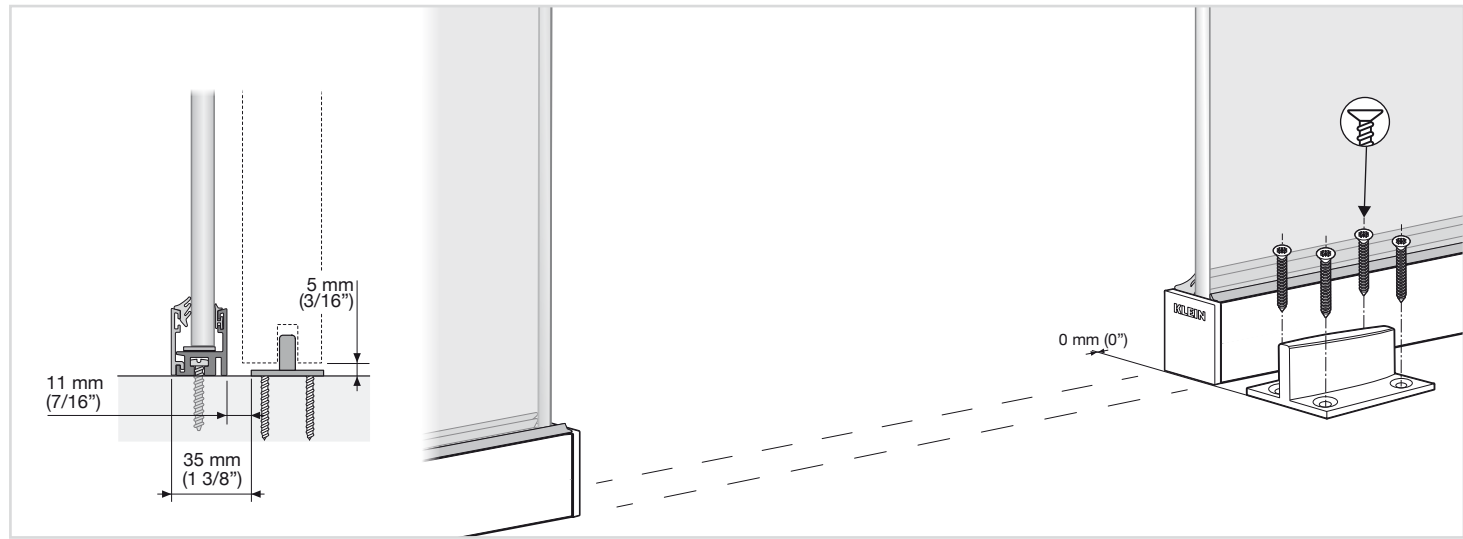
Vidrio 12 mm
Glass 1/2"



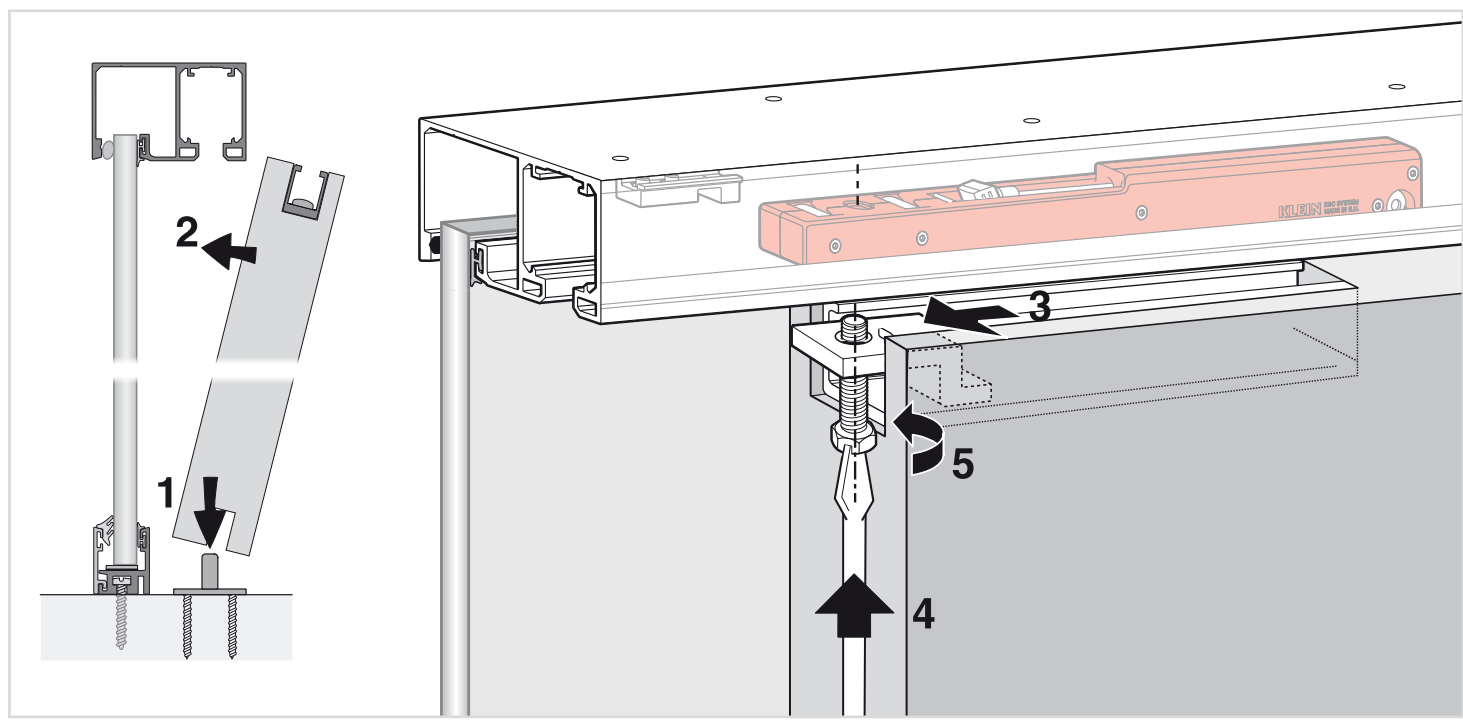
12 COLOCACIÓN DEL PERFIL RETRAC / RETRAC TRACK MOUNTING



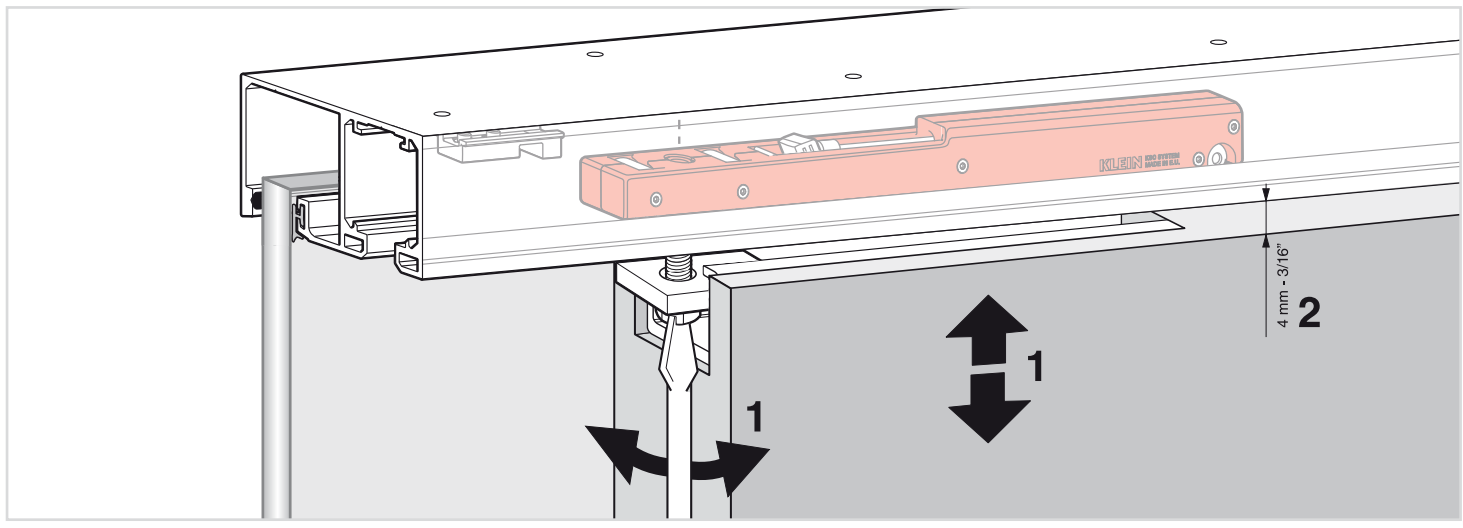
13 COLOCACIÓN DEL GUIADOR / GUIDE INSTALL



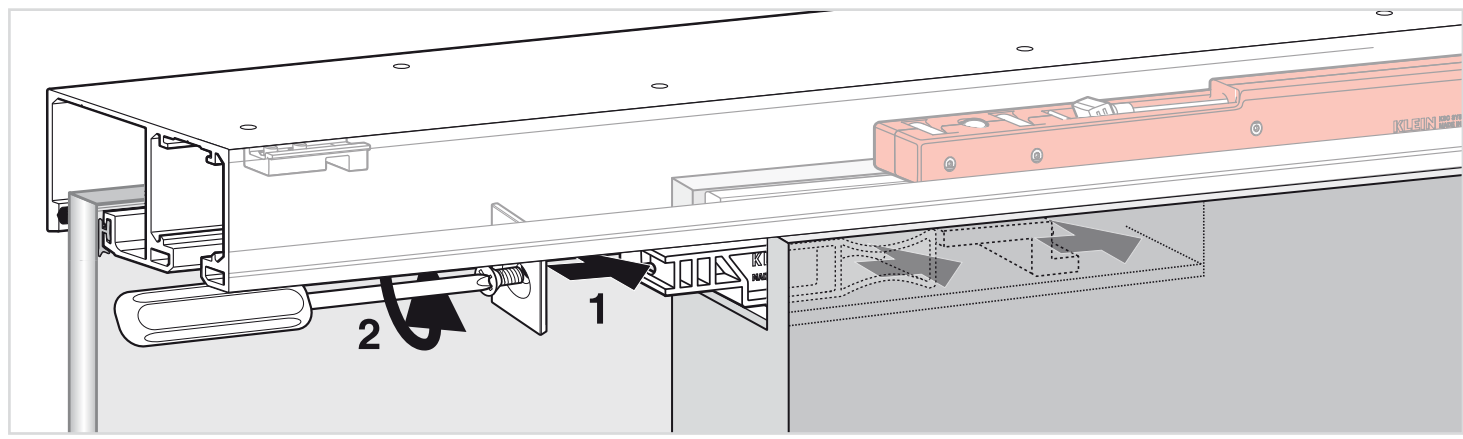
14 COLOCACIÓN DE LA PUERTA / DOOR MOUNTING



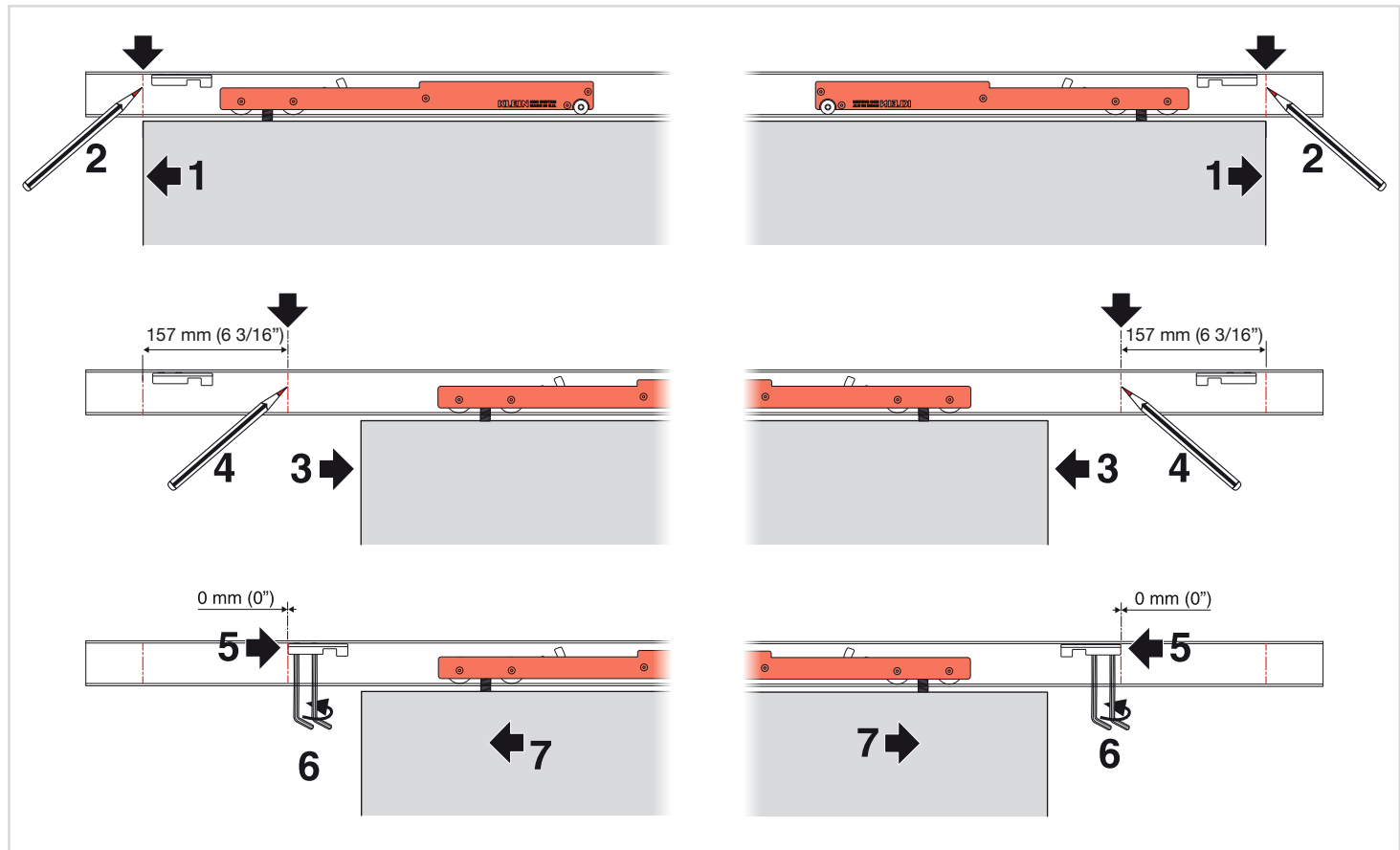
15 AJUSTE DEL PERNO / BOLT ADJUSTMENT



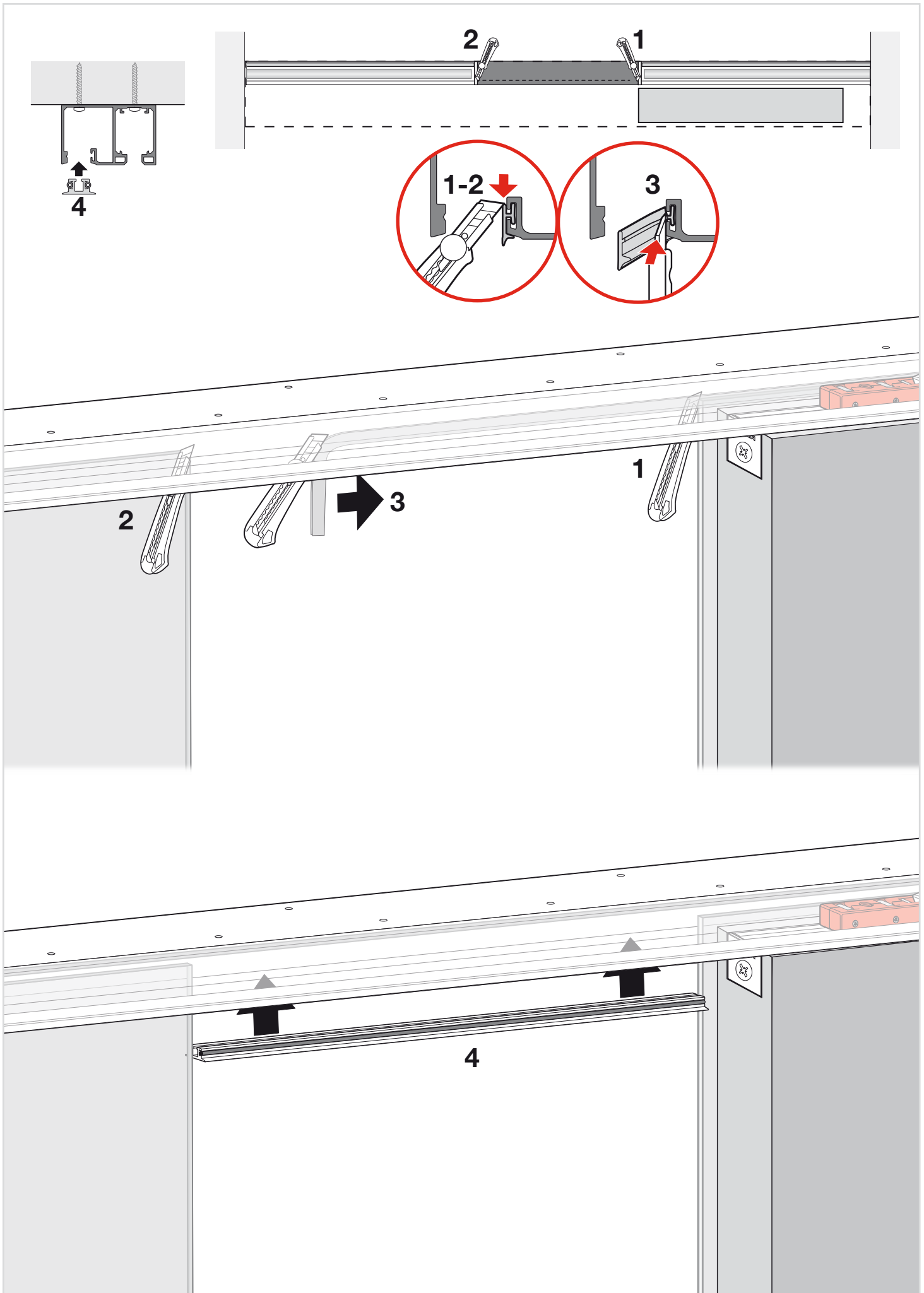
16 COLOCACIÓN DE LAS TAPAS LATERALES DEL PERFIL RETRAC
END CAPS FOR RETRAC TRACK INSTALL



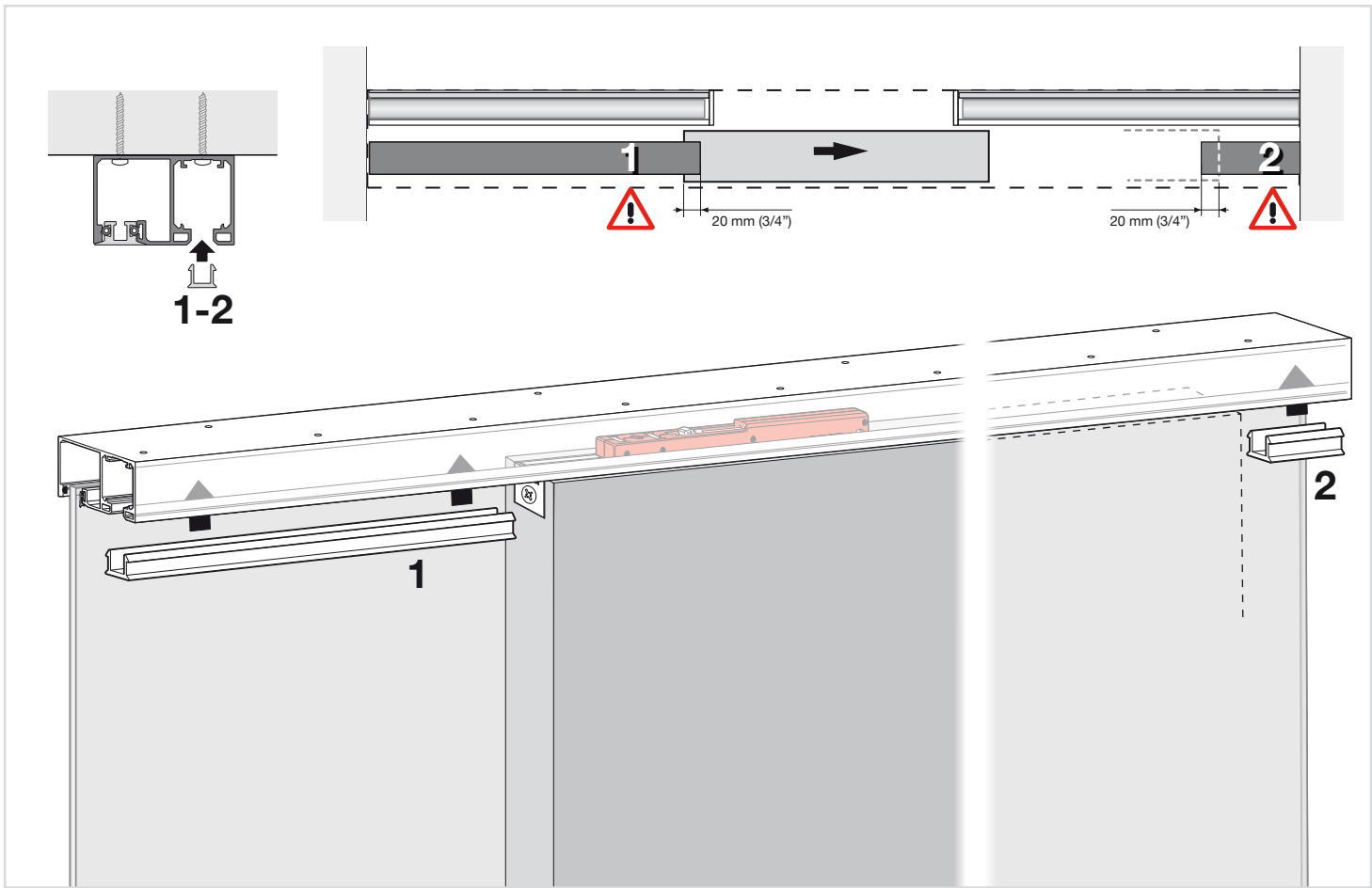
17 AJUSTE DE LOS KSC / KSC ADJUSTMENT



18 COLOCACIÓN DEL TAPABOCAS DEL CANAL DE VIDRIO FIJO COVER FOR UPPER FIXED GLASS CHANNEL



19 COLOCACIÓN DEL TAPABOCAS DEL CANAL DE PUERTA CORREDERA COVER FOR UPPER SLIDING DOOR CHANNEL



KLEIN®

KLEIN EUROPE - Edificio KLEIN, Polígono Industrial Can Cuyás, N-150 Km.1
08110 Montcada i Reixac (Barcelona-Spain)
Tel.: (+34) 935 751 010 - Fax: (+34) 935 760 109 - +INFO: www.klein-europe.com

